

Artel Pipette Tracker™ Version 3.2 Technical Bulletin

Re: Windows 7 Installation

This Technical Bulletin provides additional information regarding the installation and use of Artel Pipette Tracker version 3.2 (APT) that was not included in the User Manual. Please review and include these steps when installing and using APT.

Windows 7 Usage Statement

While Artel has not validated nor formally tested Artel Pipette Tracker (APT) version 3.2 using the Windows 7 operating system, our engineers have successfully run some rudimentary tests and we have identified customers that are successfully using this configuration. We do not expect any difficulties when the guidelines below are followed:

Administrator permissions are required for installation and registration

Install as administrator.

The installation program requests elevated permissions and prompts for an administrator username and password, when required.

First launch.

When launching APT for the first time, right click on the APT icon and choose “Run as administrator”. (This will not have to be performed each time the software is started.)

Entering the Registration Key.

When entering the registration key for APT, launch the program as an administrator. Right click on the APT icon and select “Run as administrator”.

Elevated permissions for application folder and registry node

Windows Security.

Under Windows Security, members of the Users group have Full Control of the application folder and all of its subfolders. Use the Properties window accessed from Windows Explorer to apply the permissions. The default application folder is C:\Program Files\Labtronics\.

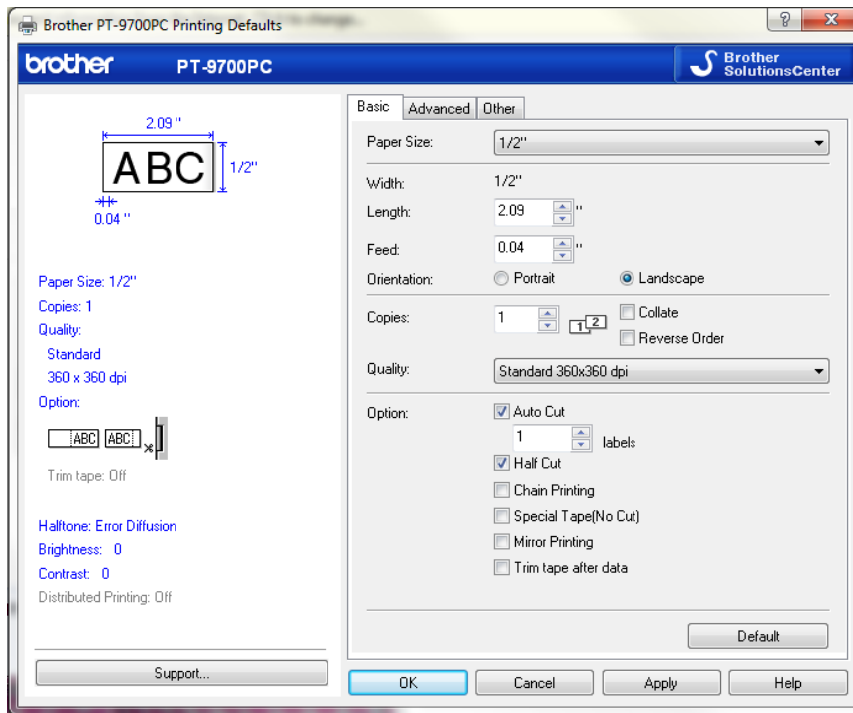
Registry Permissions.

Users also have Full Control of the HKEY_LOCAL_MACHINE\SOFTWARE\Labtronics registry key and all of its subkeys. Use the Windows Registry Editor to apply the permissions. Note that 64-bit Windows 7 uses a different key for 32-bit programs like APT; locate the APT information under the key named HKEY_LOCAL_MACHINE\SOFTWARE\Wow6432Node\Labtronics.

Pipette Tracker Enhancements

If you have the Pipette Tracker Enhancements package, please follow the steps outlined below to install the Brother Label Printer and the Enhancements CD.

1. **Install the Brother Label Printer** using the CD provided with the unit.
 - a. If you cannot locate the CD, drivers can be found on the Brother support website, <http://www.brother-usa.com/Support>
2. Once the Brother Label Printer has been installed, **edit the Brother Printer settings**.
 - a. **Right click** on the Brother printer and select **“Printer Properties”**
 - b. Click on the **“Advanced”** tab
 - c. Click on the **“Printing Defaults”** tab
 - d. **Edit the printer settings** according to the screenshot below



3. **Install the Enhancements CD.**
 - a. If the installation program does not open automatically, launch Windows Explorer. Navigate to the CD drive (usually drive D) right click on the drive and select explore. Double-click the Setup application to open the installation program.
 - b. Follow the instructions on the screen to install the Enhancements.
 - c. Remove the Enhancements CD and store in a safe place when the setup is complete.

4. Add each report to the Pipette Tracker report list window.
 - a. Launch Pipette Tracker
 - b. Go to **Report|Configure Reports**
 - c. Select **“Add”**
 - d. Add each report according to the table below:

<u>Report Name</u>	<u>Report Type</u>	<u>Report Template</u>
Calibration Report with Graphs	Calibration	Calibration Report with Graphs
Calibration Label	Calibration	Calibration Label
Barcode Label	Inventory	Barcode Label
As-Found and As-Calibrated	User Defined	As-Found and As-Calibrated
Pipette Performance Trend Analysis	User Defined	Pipette Performance Trend Analysis
Calibration Summary	User Defined	Calibration Summary

5. Map the Pipette Tracker label reports to the Brother Label Printer.
 - a. Launch Pipette Tracker
 - b. Go to **Report|Configure Reports**
 - c. Click to highlight the **“Calibration Label”** report
 - d. Select **“Edit”**
 - e. Next to the **destination Printer**, click on the **“Edit”** box
 - f. Click to select the **Brother Label Printer**
 - g. Click **“OK”** twice
 - h. Click to highlight the **“Barcode Label”** Report
 - i. Select **“Edit”**
 - j. Next to the **destination Printer**, click on the **“Edit”** box
 - k. Click to select the **Brother Label Printer**
 - l. Click **“OK”** three times to return the main menu

If you have any additional questions or concerns, please contact Artel Technical Support at 1-888-406-3463 or email support@artel-usa.com.